

Fischer et Crosse, Miss. Mex. 1: 192, and *X. salleanus* (Pfr.), Pils., Proc. Malac. Soc. London 4: 28.

My one specimen, from a tree-trunk in the creek valley below Sumidero (D, II, c, 6), near Córdoba, was so firmly muscular and wiggled so furiously that I was startled into dropping it. The embryonic whorls of its shell are as in *X. cordovanus* but the later whorls approach those of *X. salleanus* and are much more glossy than those of *Bunnya*. Although its male organs are quite large, its female genitalia are still immature, and possibly the spermathecal diverticulum becomes less conspicuous when fully adult. [S. & P. found none.]

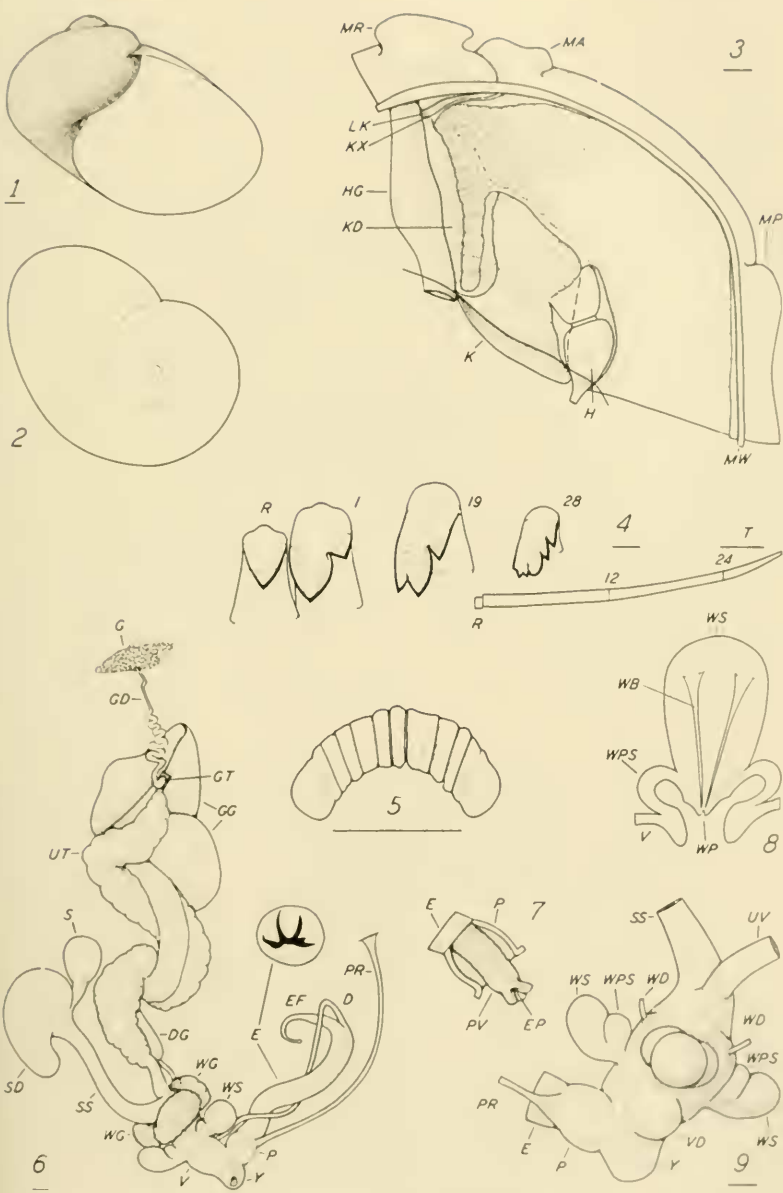
Living animal like *Bunnya*, but: Foot pallid, mottled with brown; tail with brown middorsal stripe; ommatophores dark; edge of shell-lap brown.

Preserved animal also similar but: Shell-lap about twice as broad and coarsely pebbled throughout. [In S. & P., figs. 7, A-B, appearance of shell-lobes and short tail "horn" evidently due to contraction.] Lung considerably smaller, with brownish bands; kidney with much more shortened hindgut margin so that shape appears more oblong [Cf. S. & P., f. 7-C] Spermatheca very slender but with distinct cylindric diverticulum [like in *X. sumichrasti*]. Dart-glands 2, with few tubules [probably more in adult], with ducts entering vaginal wall above still rudimentary dart-sac. [Cf. S. & P., f. 7-F; gm₁ = dart-glands; gm = dart-sac, placed like vaginal diverticulum of *Bunnya*.] Epiphallus proper very much shorter than flagellum [like Pils., f. 14]; penial retractor inserting around junction with penis, which is relatively larger; vergic papilla flattened ovoid [like S. & P., f. 7-G], with epiphallic opening near its base but continued to apex by deep groove [somewhat as in *Averellia*]. Jaw with 11-13, higher ribs, of which both edges are sharply marked [see S. & P.] about 14 teeth bicuspid and 20 with some trace of entocone [S. & P. give 22 bicuspid and 10 tricuspid]; outer teeth more commonly dividing entocones and ectocones; 131 rows counted. Buccal retractor even slenderer, but with similar origin [Cf. Pils.].

A NEW GENUS OF CHINESE MICROCYSTINAE

BY H. BURRINGTON BAKER

Through the generosity of Mr. Teng-chien Yen, the anatomy (Plate 6) of a specimen of *Hyalina rathouisii* Heude (1882, Moll.



Figs. 1-9, *Bunnya bernadinac*.